

[Skip to content](#)

[Manuals+](#)

User Manuals Simplified.



PCsensor TEMPer2 Sensor USB Thermometer User Manual

April 22, 2022 April 22, 2022

[Home](#) » [PCsensor](#) » PCsensor TEMPer2 Sensor USB Thermometer User Manual 

Contents [hide](#)

[1 PCsensor TEMPer2 Sensor USB Thermometer](#)

[2 How to use](#)

[3 Functions](#)

[4 EMAIL FUNCTION](#)

[5 Data Remote](#)

[6 General Setting](#)

[7 Contact us](#)

[8 Documents / Resources](#)

[8.1 Related Manuals / Resources](#)



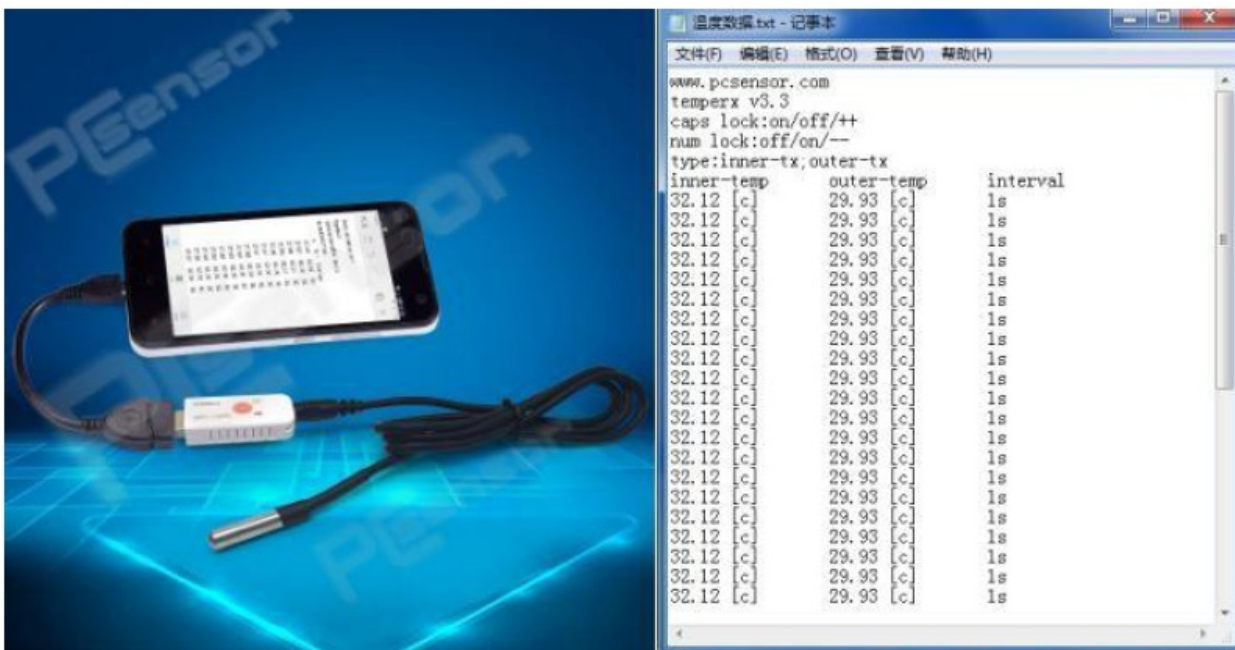
PCsensor TEMPer2 Sensor USB Thermometer



How to use

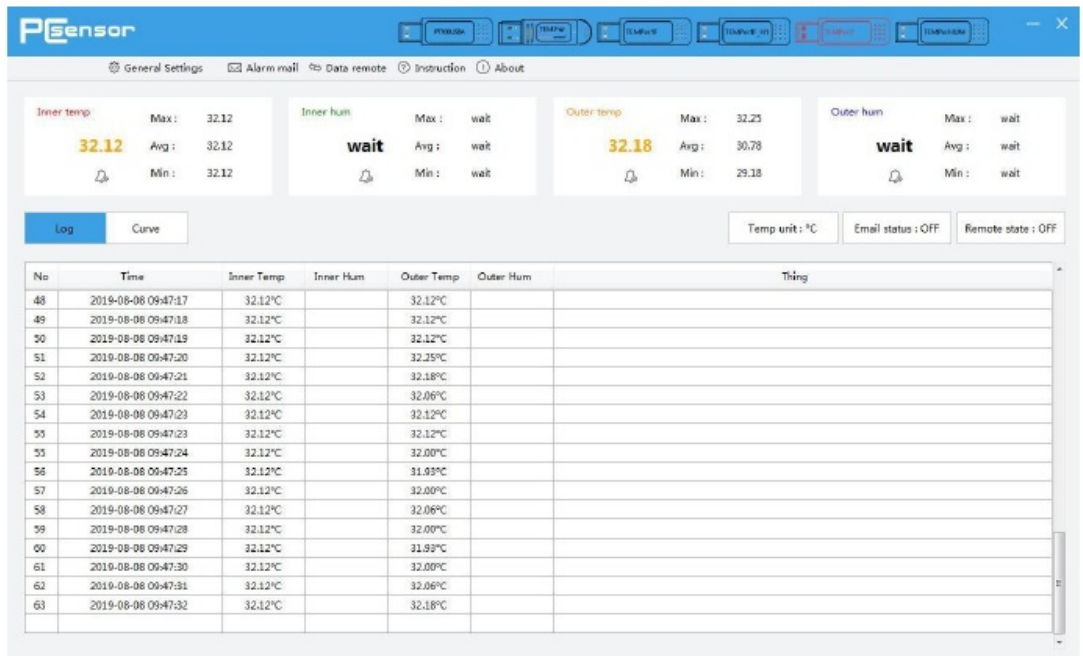
Without our software

Insert the device into the USB interface of the computer or use the adapter cable to connect to the USB enabled device such as the mobile phone, open a document or excel table that needs to record temperature data, press the “TXT” button on the device or long press the “Caps Lock”key or “Num lock” key on the keyboard for 3 seconds to start the automatic printing function, and press the “Caps Lock” key twice to increase the printing interval by one second, Press “Num Lock” twice to shorten the print interval by one second.



With our software

Download our latest software in <http://store.pcsensor.com/software1> After the software is installed, plug the device into the computer and double-click to open the software. The software automatically identifies the device and starts

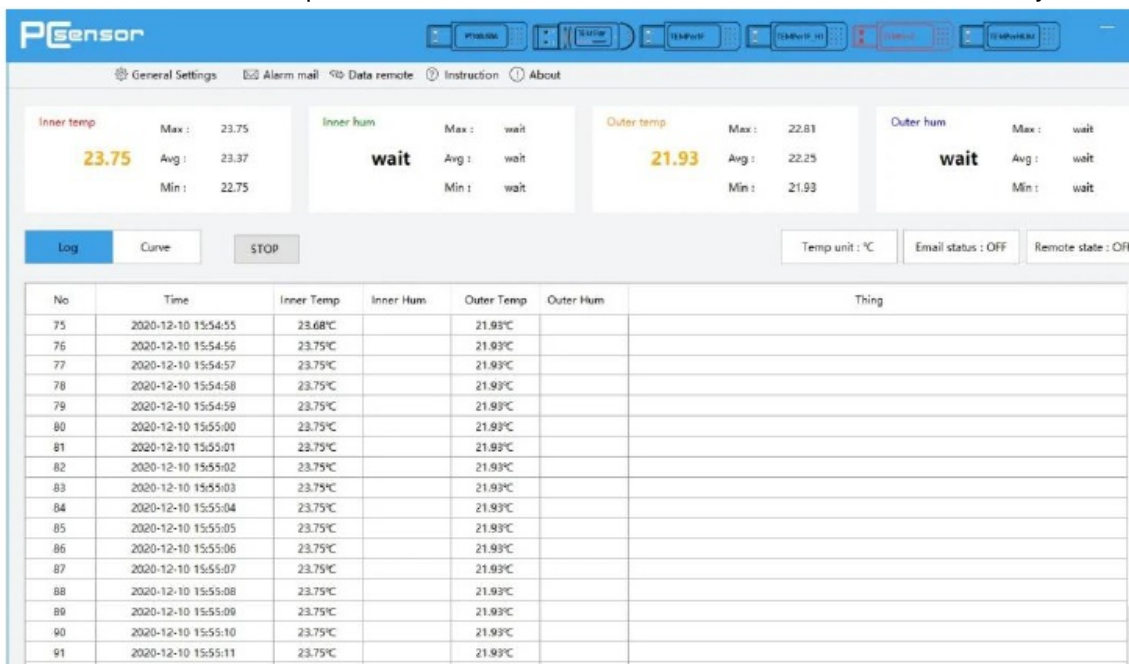


reading the temperature

Functions

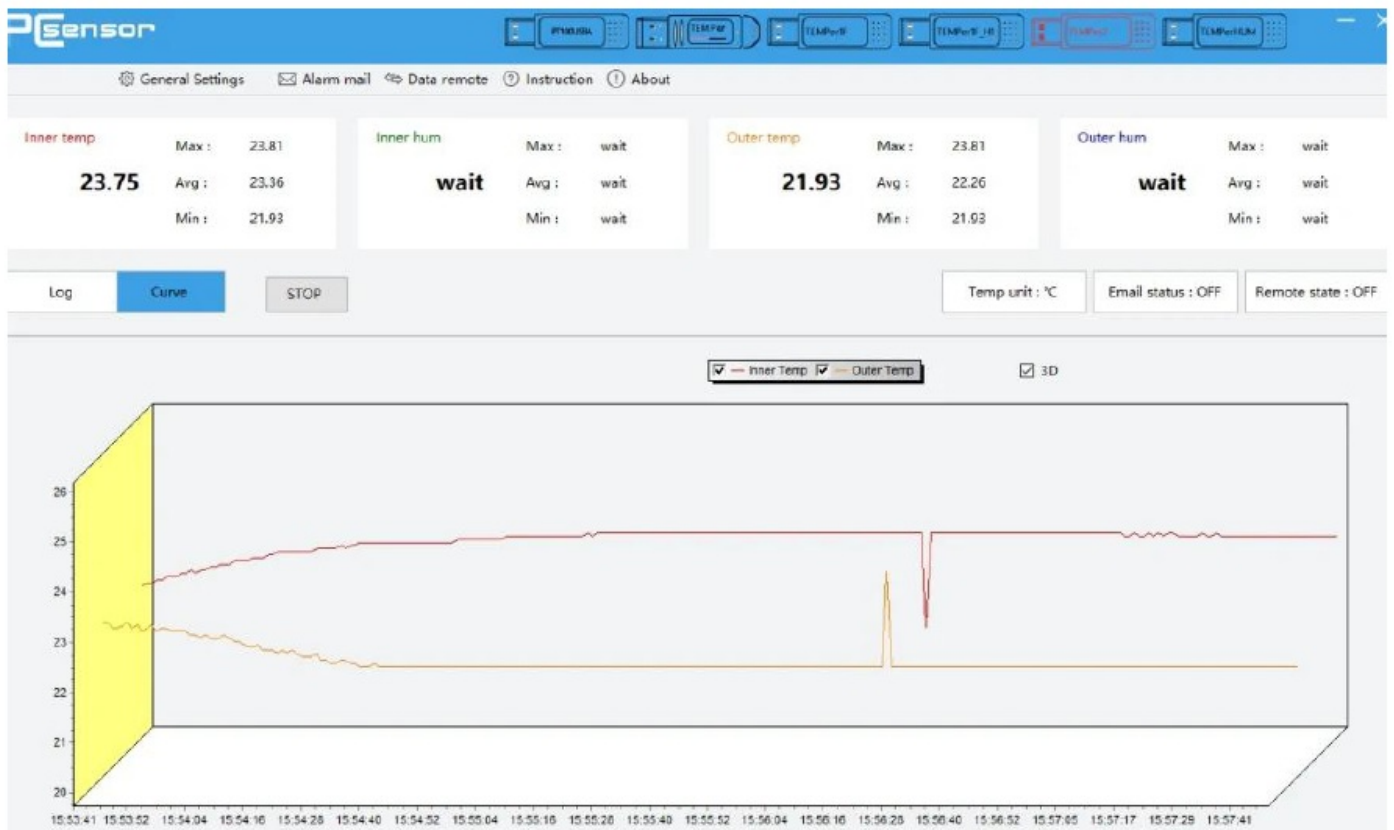
LOG

Record the Real-time Temperature Data and Save Them in the Related File Automatically.



CURVES DISPLAY|

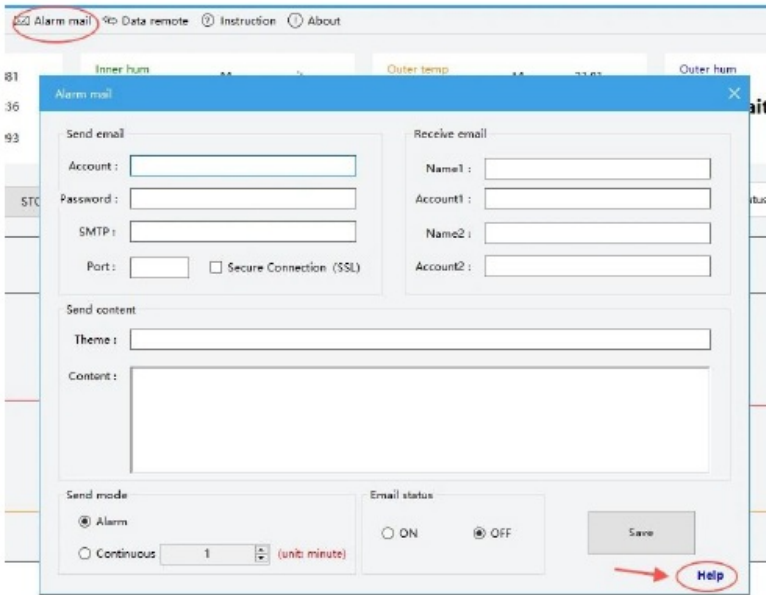
The Curves can Real-time Display the Changing Situation of Temperature. The Tendency of Curves Responds the Real-time Temperature Situation. ADVISE: Please Check the Log or Data File in Save Contents When You Want to Check the Historical Data.



EMAIL FUNCTION

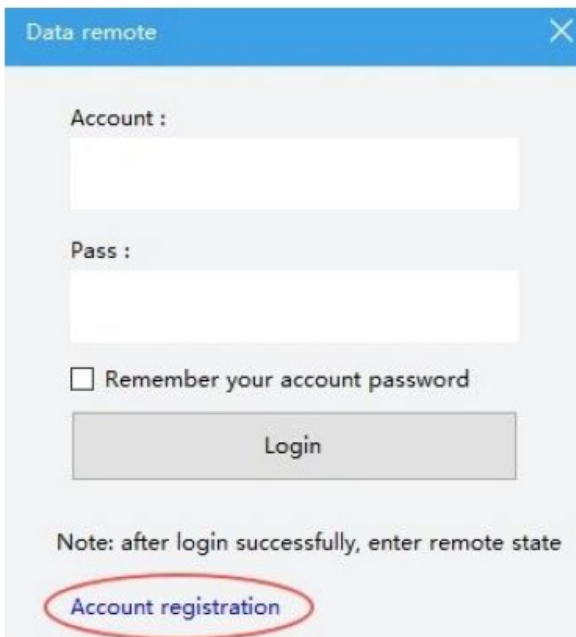
Fill in the Related Information of Email and Save it. The Requirement of Send

Email: Support POP3/SMTP and Other Server Port. Receive Email you can fill in two. Related Function: 1) when the Alarm is on, it will send the Email to Specifie Email Box Automatically if the Temperature Reach the Alarm Limit. 2) You can set the Sending Interval, and then it will send the Email to the Specified Mail Box at Set Intervals. (Advise) 3) it can Send Email Continuously to the Specified Mail Box. (Deprecated feature)



Data Remote

you can view the data remote in other computer after you log in the registering account.



General Setting

- a) Read interval-Language-Temp unit -Software shutdown mode
- b) Calibration

- c) Alert setting
- d) File saving
- e) Voice Alert

Contact us

If you have any questions or need support, do not hesitate to contact us

Email: sales@pcsensor.com / 3123394646@qq.com

Skype: pcsensor-rding

Documents / Resources



[PCsensor TEMPer2 Sensor USB Thermometer \[pdf\] User Manual](#)
 TEMPer2, Sensor USB Thermometer, TEMPer2 Sensor USB Thermometer

Related Manuals / Resources

[Rubicon Wireless Thermometer User Manual](#)

Wireless Thermometer



[myUTN USB Dongleserver User Manual](#)

myUTN USB Dongleserver User Manual - Optimized PDF
 myUTN USB Dongleserver User Manual - Original PDF



[ACCURITE Surface Thermometer User Manual](#)

ACCURITE Surface Thermometer User Manual Instructions: Place thermometer on rack INTERNAL TEMPERATURES at set point. Remove by...



[logitech USb Headset User Guide](#)

logitech USb Headset User Guide KNOW YOUR PRODUCT CONNECTING THE HEADSET Plug the USB-A connector into the...

[Manuals+](#),

- [home](#)
- [privacy](#)